



Parks & Recreation

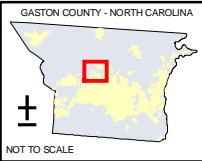
1303 Dallas-Cherryville Hwy.
 Dallas, NC 28032
 Phone: 704-922-2160
 Fax: 704-922-2166

The mission of Gaston County Parks and Recreation is to acquire, develop, maintain, and manage parks; to efficiently manage public resources; and to provide opportunities for citizens to participate in wholesome leisure activities.

The County Parks and Recreation Department plans, develops, and maintains parks, and provides an array of organized activities to help meet the leisure needs of the citizens of the County.

At the present time, the Department is maintaining and managing eighteen, (18) parks, and most recently developed the George Poston Park, a 350-acre parcel of land located on the Lower Spencer Mountain Road.

The Department also provides technical assistance to municipalities and other organized groups throughout the County in the design and construction of recreational facilities and the development of recreational programs. The County's parks and recreational programs are open to all citizens of the County regardless of age, sex, race, or economic status. Recreation is an important contributor to building sound physical and mental health, to molding good citizenship and character, and to reducing crime and delinquency. The parks system makes our community a more attractive and desirable place for homeowners, business, and industry.

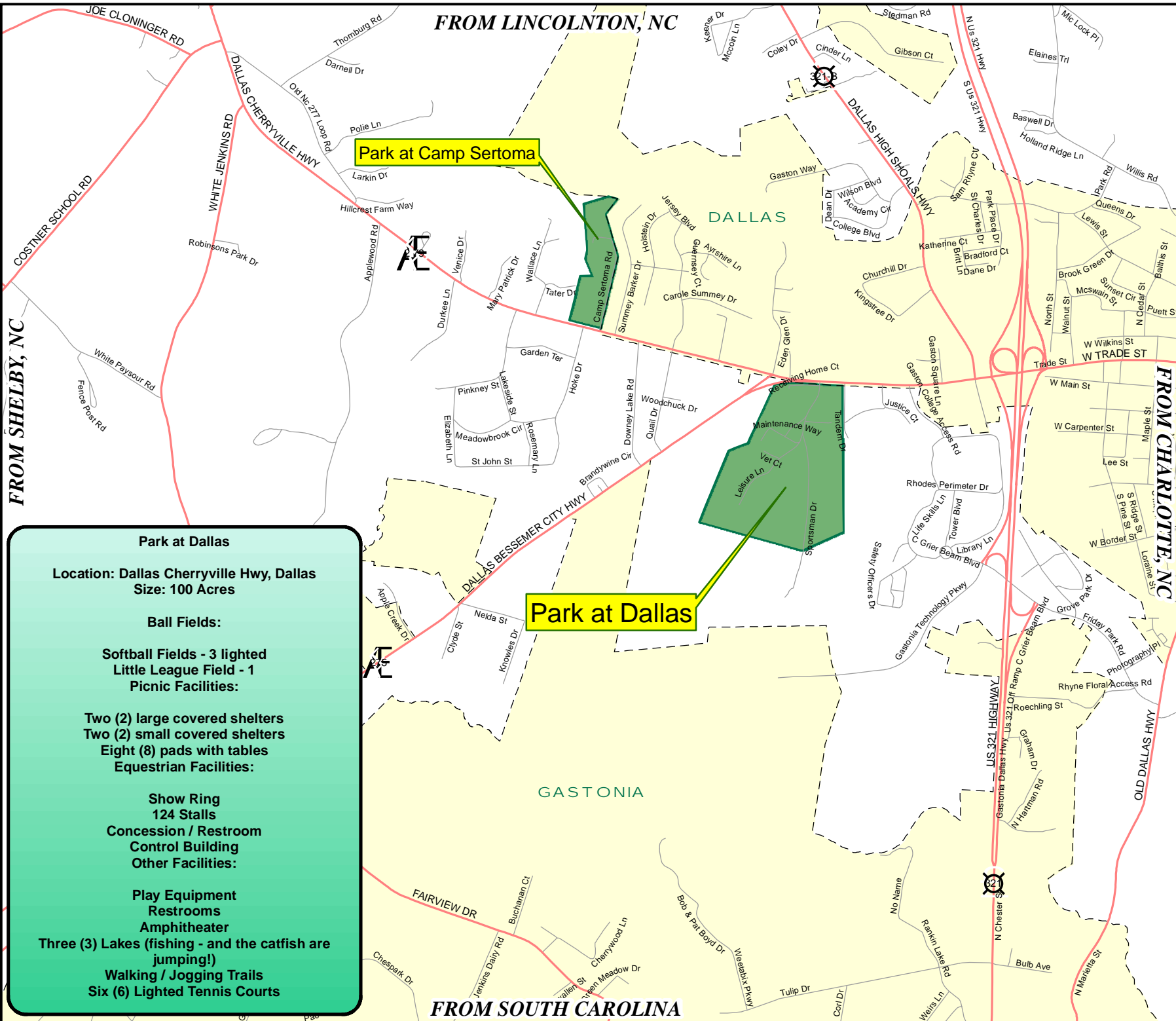
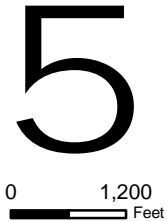


Map compiled by the Gaston County Planning & Development Services. Transportation, Hydrography and other major surface features shown were automated from 2000 - 1:2400 scale orthophotography, (NC State Plane Coordinate System NAD 83). Property Parcels automated by Gaston County Tax Department from recorded deeds and available photography.

Although strict accuracy standards have been employed in the compilation of this map, Gaston County does not make or imply any warranties or assume any responsibility for the information presented on this map or its use.

This map may not be resold or otherwise used for trade or commercial purposes without the expressed written consent of Gaston County, in accordance with North Carolina General Statute 132-10.

Created by: Planning GIS - JGG.
 Date: July 25, 2007, - 8:40 a.m.



Park at Dallas

Location: Dallas Cherryville Hwy, Dallas
Size: 100 Acres

Ball Fields:

- Softball Fields - 3 lighted
- Little League Field - 1
- Picnic Facilities:

Two (2) large covered shelters
Two (2) small covered shelters
Eight (8) pads with tables

Equestrian Facilities:

- Show Ring
- 124 Stalls
- Concession / Restroom
- Control Building
- Other Facilities:

Play Equipment
Restrooms
Amphitheater
Three (3) Lakes (fishing - and the catfish are jumping!)
Walking / Jogging Trails
Six (6) Lighted Tennis Courts

Park at Camp Sertoma

Park at Dallas

FROM LINCOLNTON, NC

FROM SHELBY, NC

FROM CHARLOTTE, NC

FROM SOUTH CAROLINA